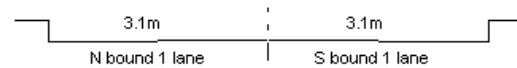


YEAR

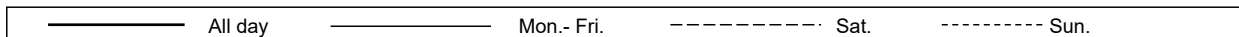
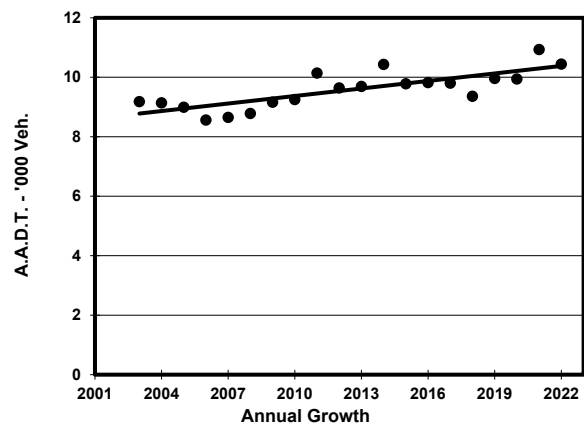
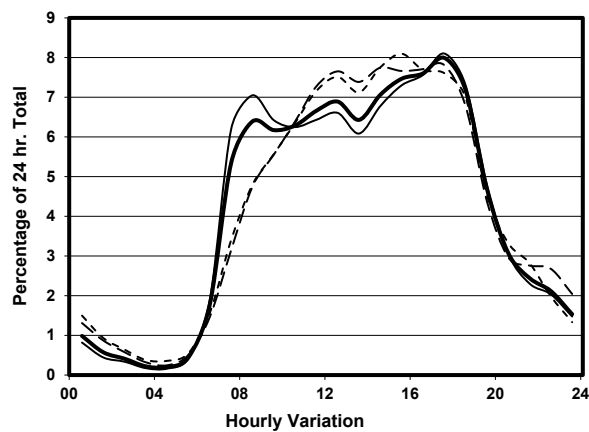
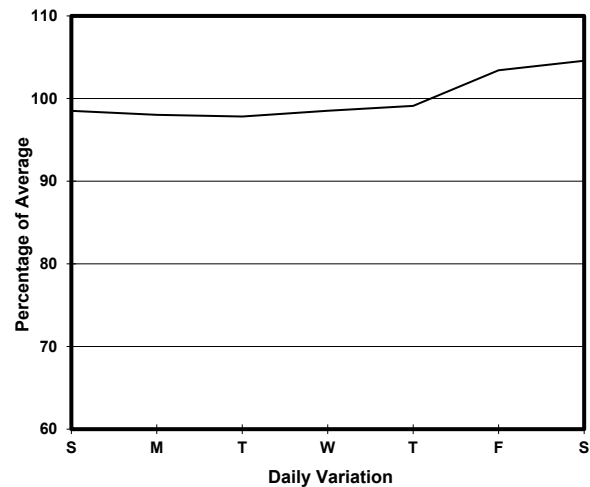
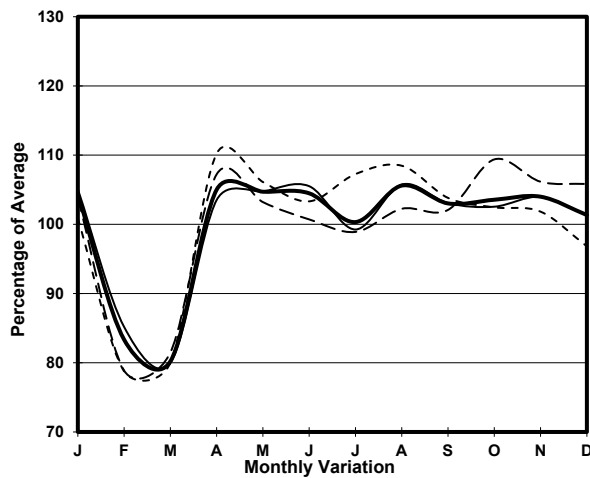
2022

LINK

TAI TAM RD (from CHAI WAN RD to SHEK O RD)

CORE STATION
ROAD NETWORK
ROAD TYPE1021
MAJOR
PRIMARY DISTRIBUTOR

1. TRAFFIC FLOW VARIATION AND GROWTH



2. TRAFFIC CHARACTERISTICS (BY DIRECTION)

Parameter	All - Day	Mon. - Fri.	Sat.	Sun.
SOUTH BOUND				
A.A.D.T.	4330	4260	4590	4430
R 12 / 24 - %	79.1	78.7	79.1	80.3
R 16 / 24 - %	93.1	93.4	92	92
AM Peak Hour	0900-1000	0700-0800	0900-1000	0800-0900
One-way flow at AM peak hour	290	300	280	260
T - % (AM)	-	11.7	-	-
PM Peak Hour	1800-1900	1800-1900	1600-1700	1600-1700
One-way flow at PM peak hour	290	300	340	320
T - % (PM)	-	1.9	-	-
Prop.of commercial vehicles - 16 hr.	-	6	-	-
NORTH BOUND				
A.A.D.T.	6110	6120	6330	5880
R 12 / 24 - %	83.2	84.4	80.4	79.9
R 16 / 24 - %	94.4	94.8	93.1	93.3
AM Peak Hour	0800-0900	0800-0900	0900-1000	0900-1000
One-way flow at AM peak hour	410	480	330	320
T - % (AM)	-	9.7	-	-
PM Peak Hour	1700-1800	1700-1800	1700-1800	1700-1800
One-way flow at PM peak hour	570	580	560	520
T - % (PM)	-	4.8	-	-
Prop.of commercial vehicles - 16 hr.	-	8.8	-	-

3. OTHER INFORMATION AND COMMENT

4. Vehicle classification and occupancy - Monday to Friday

Time		Class of vehicle									
		Motor Cycle	Private Car	Taxi	Private LB	PLB	Goods veh.		Non Fr. Bus	Fr. Bus	
							Light	M & H		SD	DD
0700-0800	Pro	4.1	53.8	14.2	4.1	3.5	8.9	1.8	7.7	0.0	1.9
	Ocp	1.0	1.5	2.0	14.4	18.3	1.7	1.0	21.4	0.0	46.8
0800-0900	Pro	6.3	60.8	13.7	0.5	2.1	7.9	3.7	3.2	0.0	1.7
	Ocp	1.0	1.5	2.2	9.0	18.3	1.8	1.1	9.0	0.0	43.0
0900-1000	Pro	2.8	54.7	13.9	2.2	2.8	17.3	3.3	1.1	0.0	1.8
	Ocp	1.0	1.4	1.9	2.5	14.6	2.0	1.2	1.0	0.0	30.2
1000-1100	Pro	4.6	50.2	6.6	2.0	4.0	19.1	5.3	5.9	0.0	2.3
	Ocp	1.1	1.6	1.9	1.7	8.8	1.5	1.1	5.2	0.0	21.5
1100-1200	Pro	4.1	57.1	9.9	0.8	4.1	16.6	2.5	2.5	0.0	2.3
	Ocp	1.0	1.5	1.9	5.0	13.4	1.3	1.0	9.0	0.0	19.5
1200-1300	Pro	6.6	58.2	11.0	2.2	1.1	14.8	2.2	2.2	0.0	1.6
	Ocp	1.1	1.6	2.3	3.5	10.0	1.8	1.3	7.3	0.0	20.8
1300-1400	Pro	3.0	64.6	3.8	4.6	3.0	12.9	2.3	3.0	0.0	2.7
	Ocp	1.5	1.5	2.2	3.7	10.3	1.9	1.0	1.3	0.0	20.3
1400-1500	Pro	2.7	54.1	10.8	4.7	4.1	13.5	4.1	4.1	0.0	2.0
	Ocp	1.0	1.6	2.1	3.1	10.5	2.0	1.2	2.0	0.0	27.5
1500-1600	Pro	3.9	56.7	14.9	0.0	2.8	12.1	3.9	4.4	0.0	1.5
	Ocp	1.4	1.6	1.8	0.0	15.8	1.8	1.4	13.1	0.0	27.3
1600-1700	Pro	8.4	46.2	13.9	1.5	1.0	16.9	3.0	7.4	0.0	1.7
	Ocp	1.1	1.7	2.1	1.7	15.0	2.3	1.2	13.2	0.0	35.6
1700-1800 Peak hour	Pro	7.2	60.2	13.4	0.0	4.6	10.8	0.5	1.5	0.0	1.8
	Ocp	1.1	1.7	2.0	0.0	16.0	2.0	1.0	5.0	0.0	51.7
1800-1900	Pro	8.8	70.0	11.9	0.0	0.9	5.7	0.0	1.3	0.0	1.3
	Ocp	1.1	1.7	2.0	0.0	18.5	1.3	0.0	9.0	0.0	46.9
1900-2000	Pro	7.8	68.8	15.6	0.0	2.6	0.7	0.0	2.6	0.0	1.9
	Ocp	1.1	1.4	2.0	0.0	18.5	1.0	0.0	9.3	0.0	22.2
2000-2100	Pro	2.1	67.9	17.8	0.0	4.2	4.2	0.0	1.0	0.0	2.9
	Ocp	1.0	1.4	1.9	0.0	6.5	1.3	0.0	1.0	0.0	12.8
2100-2200	Pro	0.0	59.8	23.0	0.0	4.6	4.6	2.3	0.0	0.0	5.7
	Ocp	0.0	1.5	1.7	0.0	14.5	1.0	3.0	0.0	0.0	10.0
2200-2300	Pro	5.0	67.2	13.4	0.0	3.4	6.7	0.0	0.0	0.0	4.2
	Ocp	1.0	1.3	1.6	0.0	3.5	1.5	0.0	0.0	0.0	6.2
16 hours	Pro	5.4	58.8	12.6	1.5	2.8	11.3	2.3	3.3	0.0	2.0
	Ocp	1.1	1.5	2.0	5.4	13.6	1.8	1.2	10.3	0.0	28.5

Legend: Pro. Proportion of vehicles in % (Sum may not add up to 100% due to figure rounding)*

Ocp. Average occupancy of vehicles including both driver and passengers*

M&H Medium and Heavy

* All traffic data are collected from combined bounds